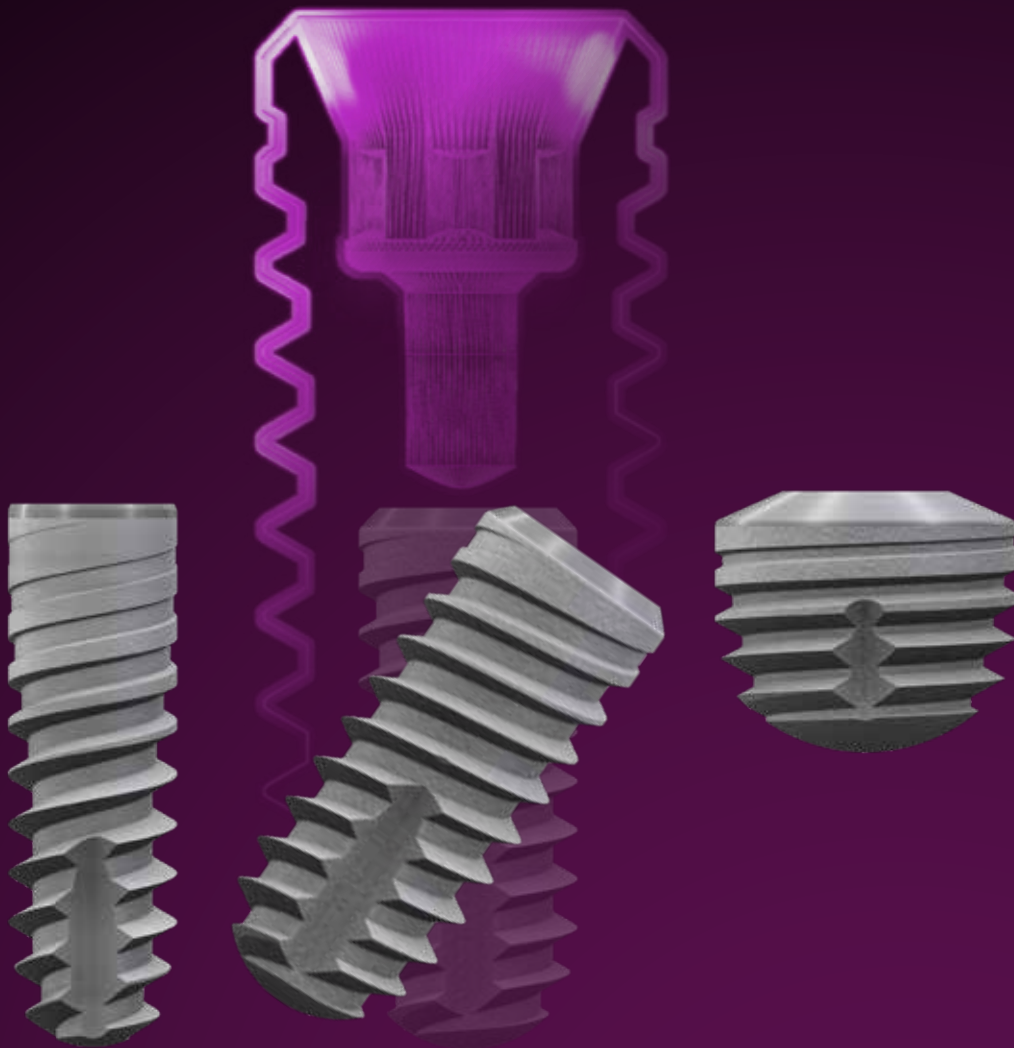


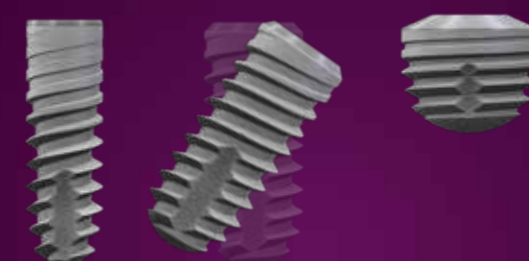
copaSKY

Implant System





copa
SKY 



*Narrow.
Slanted.
Ultra-short.*

The bredent group develops and produces implant solutions locally in southern Germany - our many years of experience characterise us and our products.

The properties of our copaSKY implants make them suitable for any bone situation.

- copaSKY 3.0 for the narrow gap ≤ 6 mm
- copaSKY set at an angle for optimal utilisation of the existing bone
- copaSKY ultra-short for low bone height

copaSKY

Testimonials



Prof. Dr. Jörg Neugebauer

Dental practice,
Landsberg am Lech (Germany)

The main advantage of the narrow copaSKY 3.0 implant is the standardised implant abutment connection, which is identical to that of the standard copaSKY implants. Especially with SKY fast & fixed restorations, the copaSKY 3.0 enables effortless realisation. In the narrow jaw area of the anterior teeth, the copaSKY 3.0 is used to ensure that the implants are placed in the bone in the best possible way. In the premolar region, we use angulated implants to optimally utilise the local bone and in the molar region, ultra-short implants offer an ideal solution to avoid further augmentation or large extensions.



Dr. Florian Göttfert

edel & weiss,
Nuremberg (Germany)

As a practice specialising in aesthetic and oral surgery, we need the perfect implant for all indications. copaSKY 3.0 complements the existing portfolio of the SKY implant system used in our practice. SKY implant system used in our practice and is specially designed for indications in the anterior mandibular region and for narrow gaps smaller than 6 mm in the maxillary lateral sinus region. The simplicity of the prosthetic restoration is essential for our team in order to ensure a successful restoration by the dentist providing follow-up treatment. Of particular interest is the back taper, which stimulates bone growth around this area and ensures complete bony healing.



Dr. med. dent. Peter Randelzhofer

Implantat Competence Centrum,
Munich (Germany)

The copaSKY 3.0 is so special because it enables the same good prosthetics as a standard implant with limited mesiodistal space. This is unique.



Dr. Luis Bessa

North Clinic,
Porto, Portugal

copaSKY 3.0 is the best implant for narrow gaps - especially in the maxillary posterior region and the lower anterior region.



Dr. Venceslav Stankov

Dental Center Dr. Stankov,
Plovdiv, Bulgaria

A narrow implant increases versatility, expands indications and opens up new possibilities for patient rehabilitation. Dealing with limited spaces and anatomical defects becomes easier. Same surgical kit, same prosthetics - making life easy.

copaSKY

Characteristics

Reliable complete package

Patients with a reduced bone supply require special solutions in order to enjoy the benefits of a safe and durable implantological restoration.

With our copaSKY implant system, you can avoid traditional procedures such as bone augmentation or sinus lifts.

OP-Tray – One4All



Free Hand

- for all implants of the SKY family
- for all diameters and lengths
- Drill for D1 bones and for D2-4 bones with attachable drill stops
- Bone quality orientated drill protocol
- 1 OP tray for all implant lines



Guided

- Guided preparation for Ø 3.5 to 4.5
- Guided implant positioning (not whiteSKY)
- Drill for D1 bones and for D2-4 bones

Perfect in all bone situations

The Benefits

- High primary stability with almost all bone qualities.
- Backtaper for the application of bone chips. It reduces the friction to the cortical bone and ensures that it is preserved in the long term.
- The ultra-short copaSKY are suitable for tooth-by-tooth restorations in the posterior region.

Multifunctional implant neck for perfect interaction and high primary stability.



Single-tooth restoration



Full-Arch supply



Switching gap



Prosthesis fixation on 4 implants

Indication recommendation

Recommendations for use

	Implant Position	Single tooth	Bridges or interlocked constructions				removable
			Front	Switching gap	Freeing	Full Arch	
copaSKY	Subcrestal	Yes	Yes	Yes	Yes	Yes	Yes
copaSKY ultrashort	Subcrestal	Yes	No extensions	Tooth by tooth blocked or Individual crowns	Tooth by tooth blocked or individual crowns	Support implant	Support in the front and posterior (4 implants)
copa SKY 3.0	Subcrestal	narrow gaps ≤ 6 mm	Tooth for tooth max. 17.5°	mesial bridge abutment	No	Supporting implant in the front max. 17.5°	Support in the front and posterior (4 implants)

copaSKY

Structure of the implant

Conical-cylindrical implant shape

→ Optimum, even load distribution of the chewing Forces

Compression thread

→ ensures high primary stability in all bone qualities

Self-tapping thread

→ Ensures fast and atraumatic Insertion

Wide backtaper

→ ensures a stable bone

Cylinder

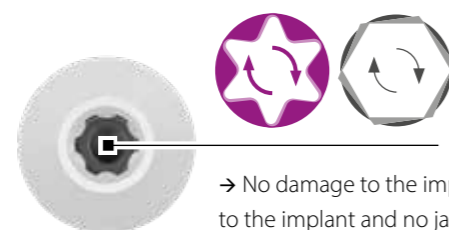
→ ensures primary stability

Cone

→ facilitates and accelerates the Insertion

Torx

→ Gold standard for insertion with high torques



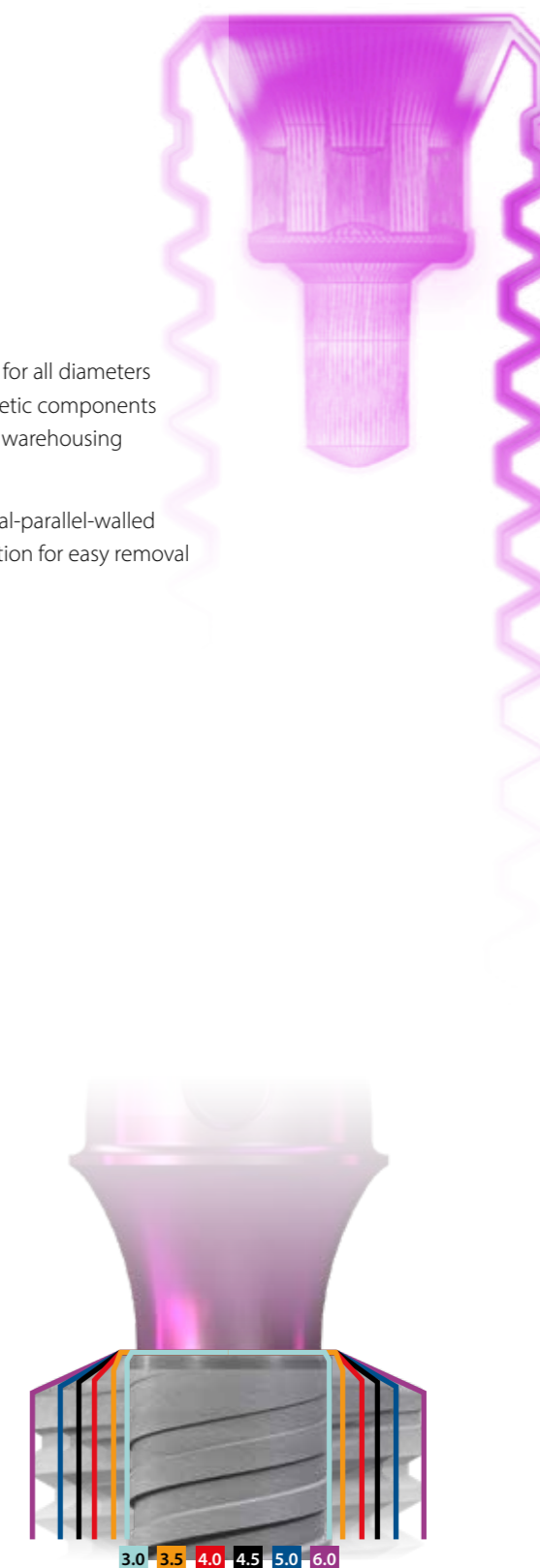
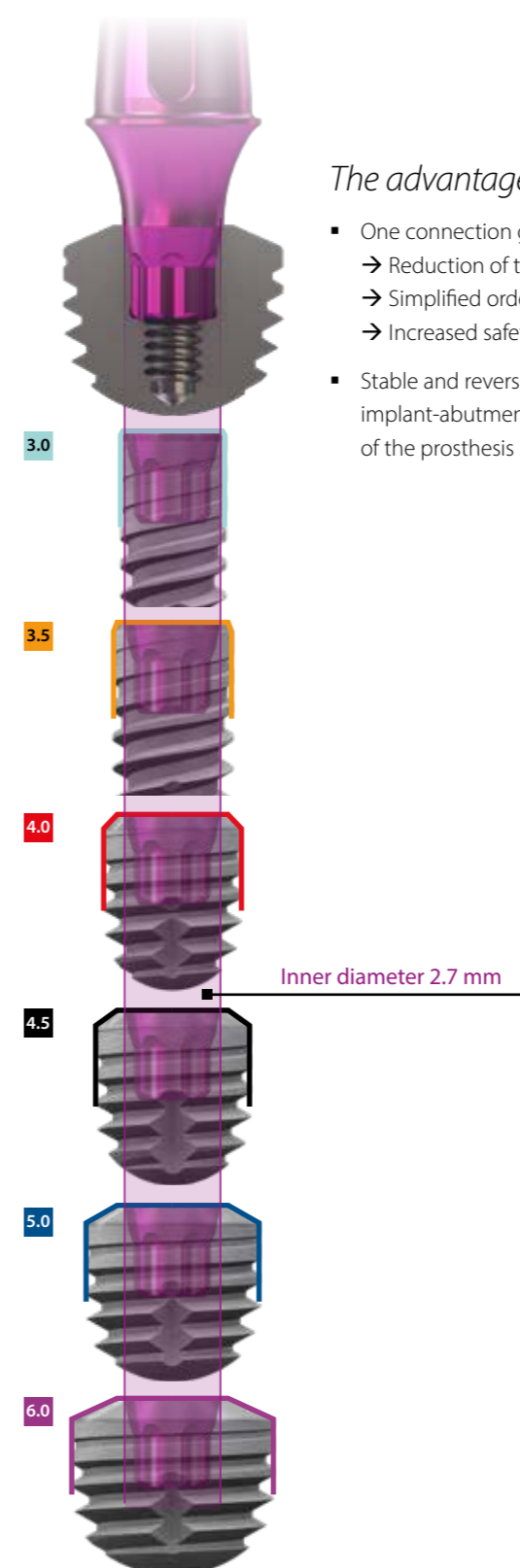
→ No damage to the implant damage to the implant and no jamming of the insertion instruments

One connection for all diameters

Prosthetic monoplatform

The advantages

- One connection geometry for all diameters
 - Reduction of the prosthetic components
 - Simplified ordering and warehousing
 - Increased safety
- Stable and reversible conical-parallel-walled implant-abutment connection for easy removal of the prosthesis



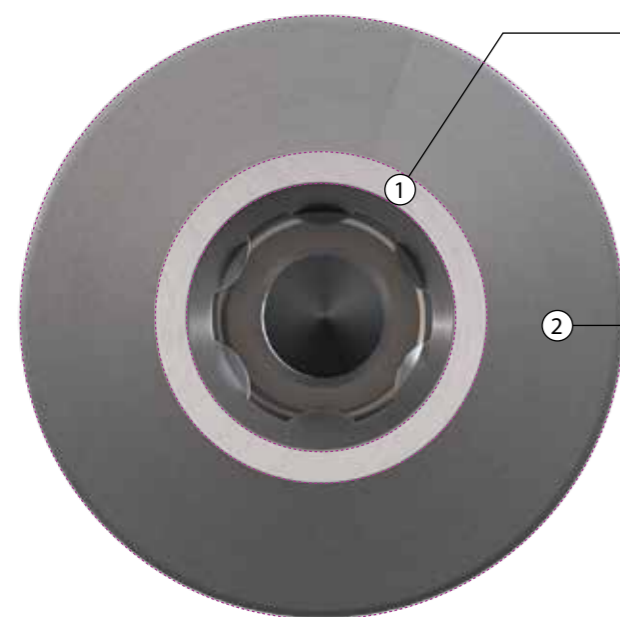
copaSKY

Implant surface

Surface attachment

The multifunctional implant neck in combination with the abutment material, design and surface is an essential prerequisite for the formation of a gingival cuff that protects the implant.

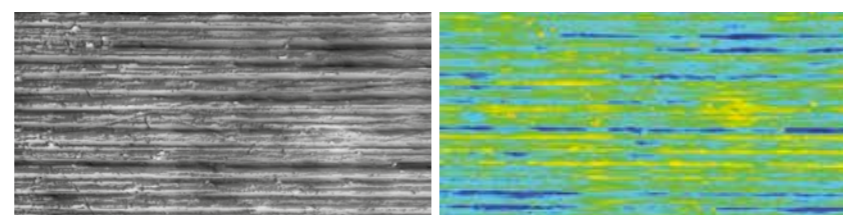
Our One-Time-Therapy additionally supports this process.



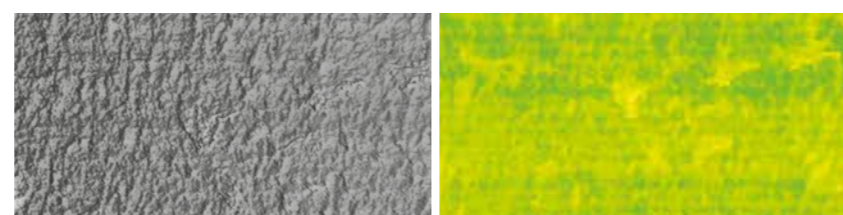
① **Machined surface**
Horizontal microgrooves support the attachment of the connective tissue.

② **Etched surface**
Etched transition structure offers bone and soft tissue possibilities for adaptation.

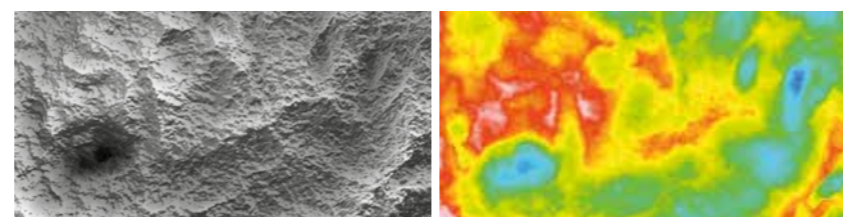
③ **Blasted & etched surface**
Blasted etched surface for the attachment of osteoblasts for rapid osseointegration.



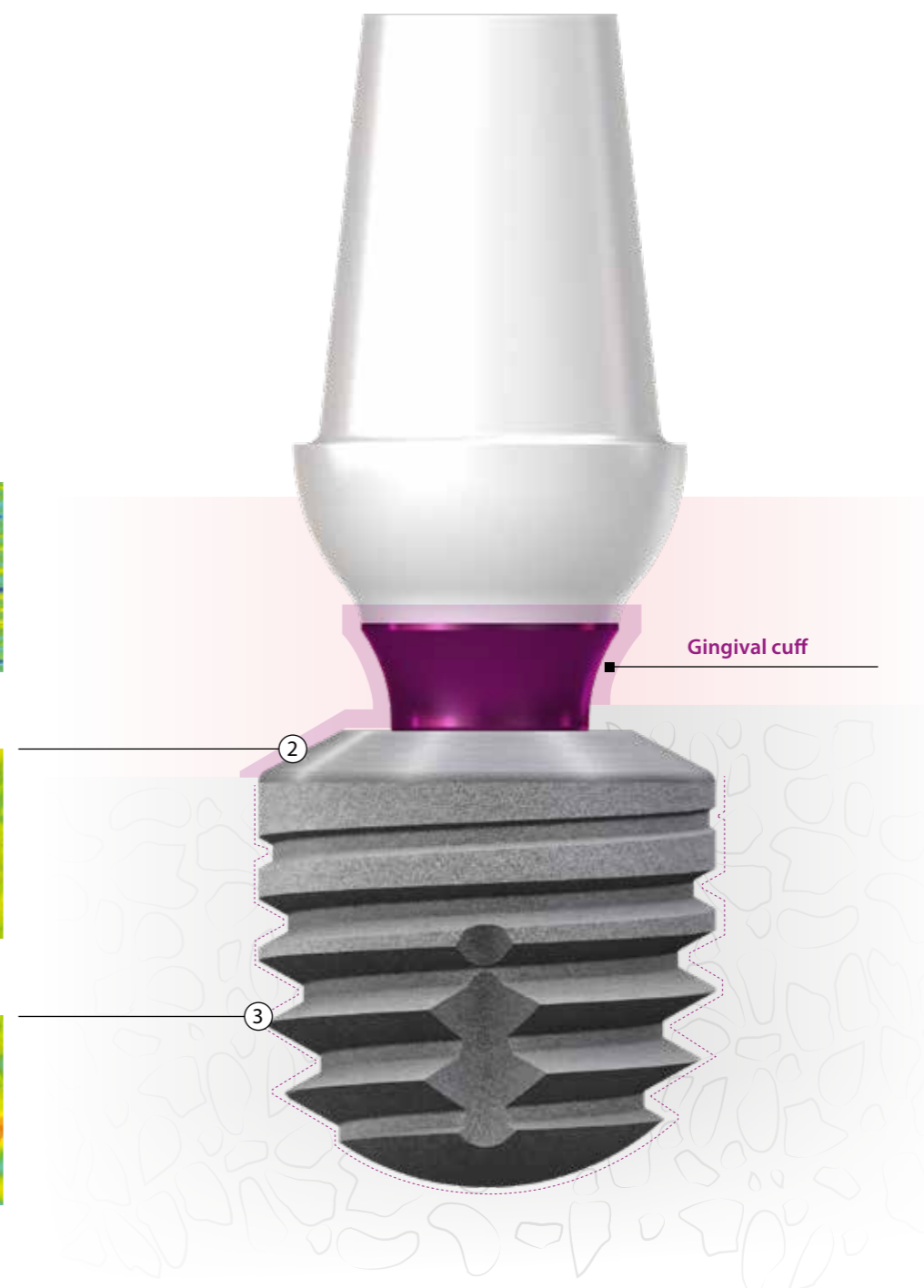
1. Epithelium (Ra ~ 0,07 µm)



2. Connective tissue (Ra ~ 0,36 µm)



3. Bone and superimposed bone (Ra ~ 2,2 µm)



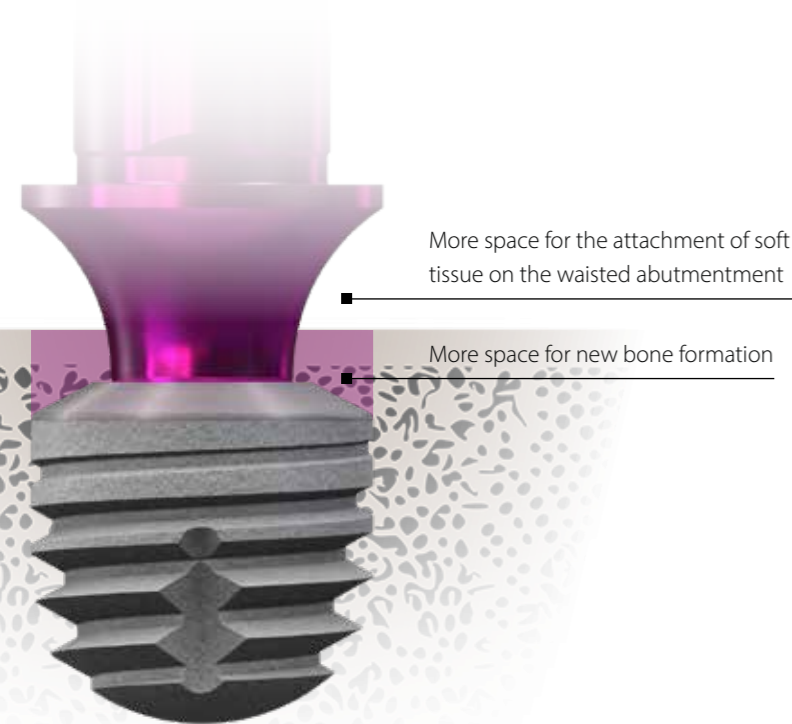
copaSKY

More bone

Bone Growth Concept

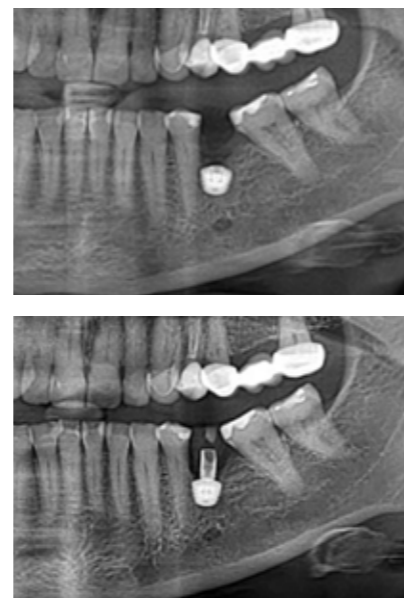
The Bone Growth Concept is the further development of the platform switch. The subcrestal placement of the microstructured back taper of the SKY and copaSKY implants in combination with customised abutments not only prevents bone resorption, but also also reliably supports osseointegration, which completely surrounds the implant with new bone and improves the implant success rate.

Subcrestal positioning



Bone growth on the back taper of copaSKY backtaper has been clinically observed in many cases and confirmed in a recent multi-centre clinical investigation and in current clinical studies.

Stable bone level



"The stable bone around the copaSKY implants is simply phenomenal"

Pictures and comments:
Zafer Kazakh, Istanbul, Turkey

More bone.
More patients.
More treatments.



360° IMPLANTOLOGY
—MORE THAN IMPLANTS—



Bone Growth Concept

Backtaper.
Microstructuring.
Subcrestal
Positioning.

One step further
than Platform Switch –
Bone Growth Concept
from bredent medical.



copaSKY

Abutments

BioHPP copaSKY elegance abutments

The BioHPP copaSKY elegance abutment is the abutment for one-time therapy and immediate restoration. We recommend the use of BioHPP copaSKY elegance abutments as a 'stressbreaker' for the permanent protection of the implants.

The soft abutment body made of BioHPP protects the implant from overloading.

One-time: An abutment change is not necessary so that the attached soft tissue is not destroyed.

Implant-abutment connection and screw seat made of titanium make it the definitive abutment.

This leaves all technologies available to you:

- Prefabricated abutments that can be customised
- Manually with the for2press process manufactured custom abutments
- CAD/CAM production from copaSKY elegance BioHPP prefabs



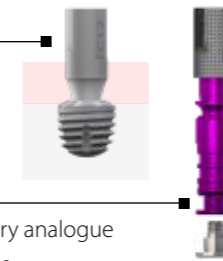
Histological analysis of SKY elegance abutments made of BioHPP. Detail of the deposition of connective tissue after 8 weeks.

Prof JE Maté Sánchez de Val,
Murcia, Spain,
Poster EAO Meeting 2016, Paris

CAD/CAM restorations

Our prosthetic components for copaSKY are suitable for the digital process landscape and offer a complete workflow for all open CAD/CAM systems in the laboratory.

Scan abutment



Screwed laboratory analogue for printed models



Options for the CEREC workflow



Prefabs made of BioHPP and grade 4 titanium KV with the original implant-abutment Connection



Large selection of titanium bonding bases for single-tooth and bridge restorations - uni.fit



Ti-base flex for temporary and permanent restorations

copaSKY

Full-Arch immediate supply

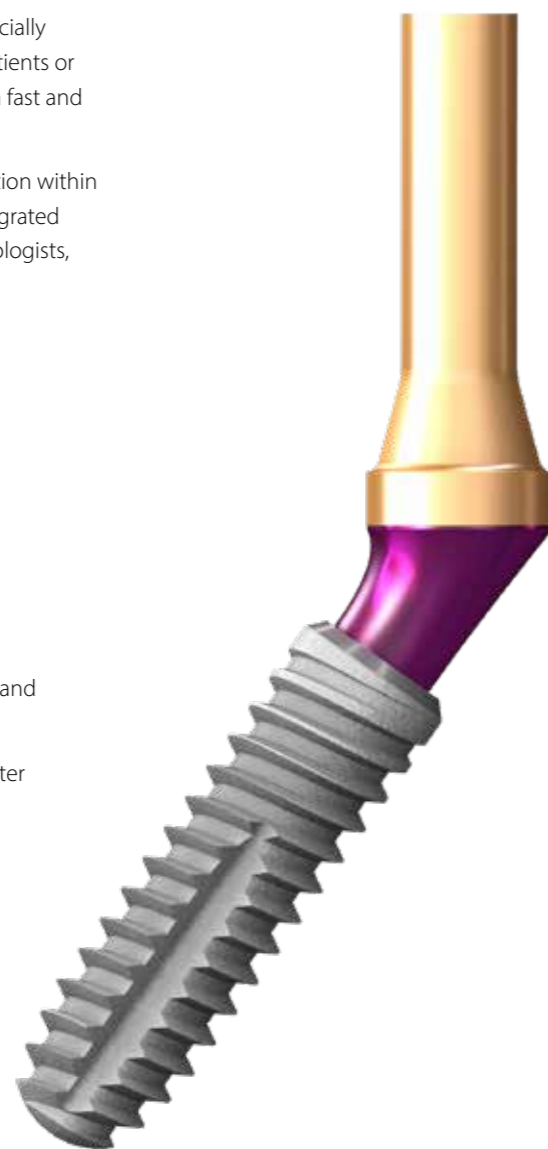
SKY fast & fixed

The SKY fast & fixed therapy from bredent medical was specially developed for the immediate restoration of edentulous patients or those with teeth that are not worth preserving. It enables a fast and reliable restoration in just one day.

The ability to perform implantation and temporary restoration within one day considerably reduces the treatment time. The integrated concept enables seamless collaboration between implantologists, prosthodontists and dental technicians.

Your benefit

- Quick and safe handling during treatment
- Form-Fit
 - High stability of the connection between abutment and prosthetic restoration
- uni.cone multi-unit abutments with slim 4.5 mm diameter
- Scalloped emergence profile in free-form technology
 - Utilisation of the existing bone
- One-Time Therapy
 - Perfectly attached soft tissue
 - Saving time and costs
 - Increase in sales



Reduced treatment times

→ Fast and safe treatment is easy on the Patient

Reduced costs

→ Fixed bridge on a reduced number of implants with utilisation of the local bone



Less surgical interventions

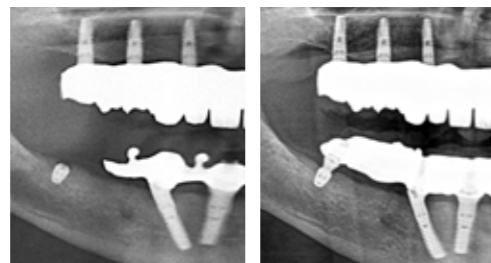
→ Avoidance of risks

Standardised workflow

→ Support through complete protocols

copaSKY*Abutments***uni.cone abutment***fast & fixed**Screwed at abutment Level*

This component already carries the diversity in its name. Universal use complements intelligent treatment concepts, increases safety through standardised processes and also reduces costs in practice organisation, regardless of the implant system used.



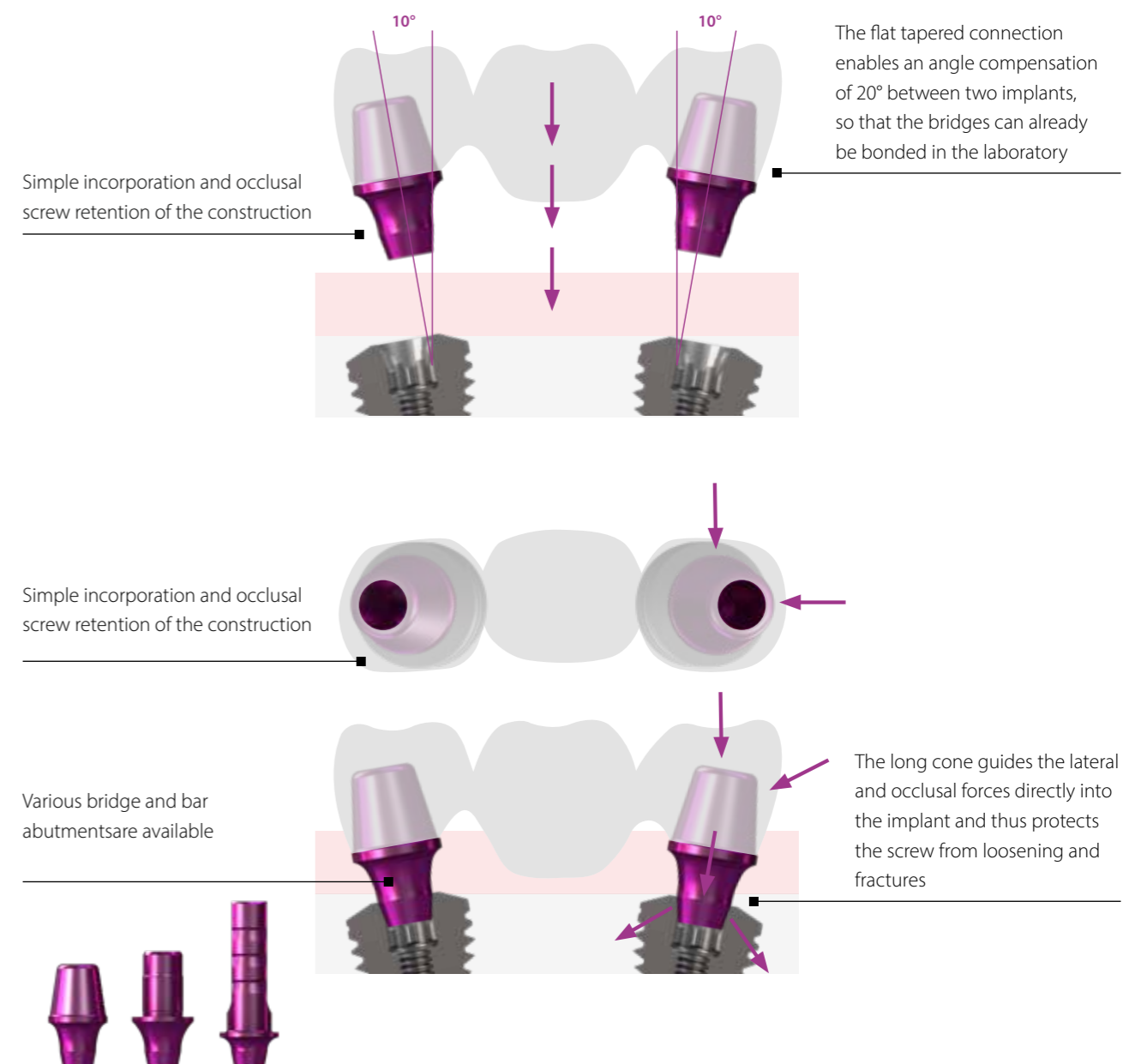
Photos: Prof Dr Jörg Neugebauer, Landsberg am Lech, Germany

To avoid extensions of more than one tooth with SKY fast & fixed short copaSKY implants are suitable - supplied with copaSKY uni.cone abutments.

The copaSKY uni.cone abutments are made with the same prosthetic components and the same prosthetic concept as the SKY uni.cone abutments.

**Bridge and bar
abutmentment***Screwed directly into the implant*

Directly screw-retained restorations with bonded bridges require angulation compensation in many cases. The way in which the lateral and occlusal forces are transferred to the implant is particularly important.



copaSKY

Abutments

extended solution

exso

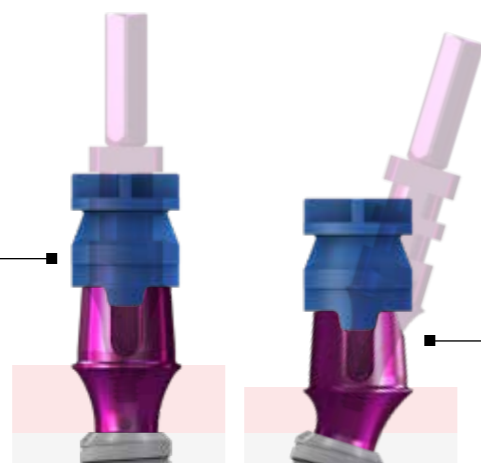
The copaSKY exso abutment ensures efficient and economical processes for cemented restorations and enables one-time therapy without changing the abutment.

Simple, fast and aesthetic Realisation of exso abutments on copaSKY



Highly economical procedure, as the final abutment is used for impression taking

Using the SKY moulding cap for closed trays



Easy impression taking of angulated implants at implant level thanks to angulation compensation of up to 35°

The easy customisability of the abutments in the laboratory creates the prerequisites for optimally designed aesthetics

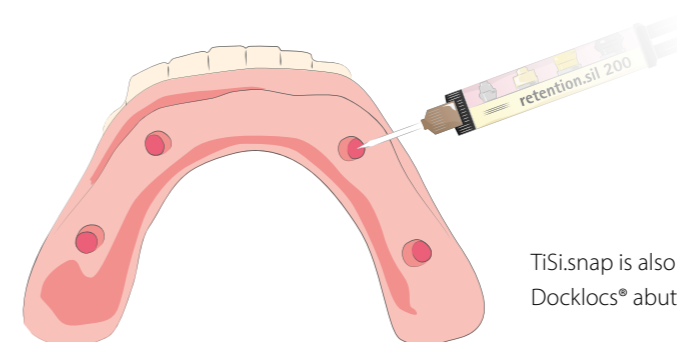


TiSi.snap

fixed and yet removable

The TiSi.snap abutments with large retention surfaces and the resilient special silicone retention.sil set new standards in the reliable and long-term fixation of dentures. The unique resilience gives the patient a natural chewing sensation.

Narrow implants in the front and ultra-short implants far posteriorly support the stability of the prosthesis with a large-span support area. The bone is preserved because little pressure is exerted on the posterior bone.



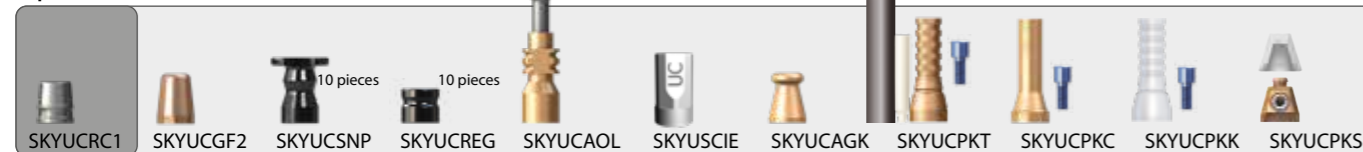
TiSi.snap is also suitable for use with Docklocs® abutments.

copaSKY implants

	L 5.2 mm	L 8 mm	L 10 mm	L 12 mm	L 14 mm
3.0	—	copa3008	copa3010	copa3012	copa3014
3.5	—	copa3508	copa3510	copa3512	copa3514
4.0	copa4005	copa4008	copa4010	copa4012	copa4014
4.5	copa4505	copa4508	copa4510	copa4512	copa4514
5.0	copa5005	copa5008	copa5010	copa5012	—
6.0	copa6005	copa6008	—	—	—

copaSKY – prosthetics

copaSKY uni.cone accessories



copaSKY uni.cone



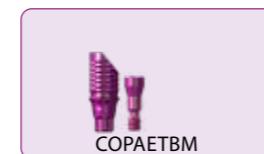
uni.cone laboratory analogue



BioHPP copaSKY elegance



titanium base



copaSKY CAD/CAM – open systems

copaSKY scan abutment 12



prefab titanium



prefab



uni.fit titanium base



uni.fit titanium base L

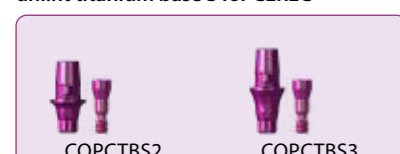


copaSKY bridge and bar abutments



closed systems

uni.fit titanium base S for CEREC®



uni.fit titanium base L for CEREC®



Simple download of instructions for use using a standard PC or mobile device and Adobe Acrobat Reader software. Free of charge at: <https://get.adobe.com/reader/>.

A printed version is available from the manufacturer within 7 days (in case of shipment to the EU).

Order information

F: +49 7309 872-440

@: dagmar.herrmann@bredent.com



Technical data

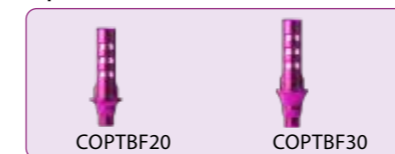
copaSKY from page 8



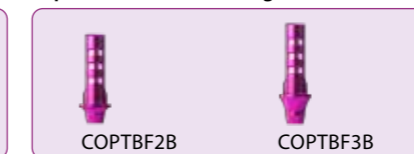
copaSKY gingiva former



copaSKY Ti-base flex



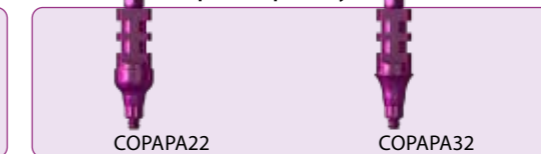
copaSKY Ti-base flex bridge



copaSKY implant analogues plaster



copaSKY open tray



copaSKY closed tray



copaSKY EXSO



EXSO laboratory analogue 3D-Print



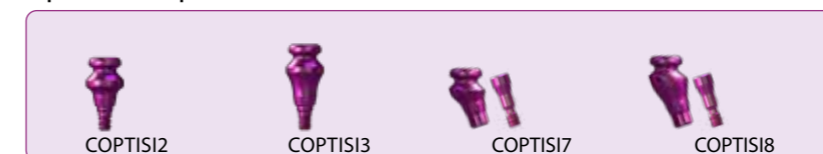
impression coping closed tray + exso



copaSKY titanium abutments



copaSKY TiSi.snap



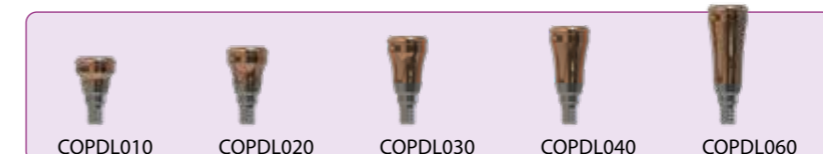
retention.sil



copaSKY screws clinic laboratory



Docklocs®-Abutments 0°



Docklocs®-Abutments anglet 18°



Docklocs® retention sets (compatible with Locator)



copa
SKY 
IMPLANT SYSTEM



50 years of bredent

bredent
medical

bredent
group

bredent medical GmbH & Co. KG · Weissenhorner Str. 2 · 89250 Senden · Germany · T: +49 7309 872-440 · F: +49 7309 872-444 · info-medical@bredent.com · www.bredent-medical.com



009932GB-20250318 Mistake and subject to change reserved